



481



504



558



563f
\$3.00



570TG



572

Part No.
Part Description

481
\$3.00
crane handwheel, AF

504
\$1.00
journal box (n) lionel
style AFO

558
\$1.00
marker lights for tender

563f
\$3.00
side frame, 6 wheel
tender truck

570tg
\$2.25
turbo generator, 3/16
Northern

572
\$3.00
wheel, rear truck, 11/16'
dia 3/16" thick



572-BF



627



633



3308L



3308S



AFO-33



PA9502

572-BF
\$2.00
bell, boilerfront

627
\$1.00
cast
brakewheel, wo/shaft
AFS, "S"

633
\$1.35
cast brakewheel & pin,
boxcar, "S"

3308L
\$3.00
large wheel, rear truck
15/16

3308S
\$3.00
small wheel, pilot
tk, wo6133

AFO-33
\$7.00
Cast yoke for 488
searchlight car

PA9502
\$14.50
k-5 pilot w/marker lights



PA8958-L



PA8958-R



PA8959
pilot, shorter steps, UP
Northern, "S"



PA8961



PA8961F



PA8968CH



PA9219

PA8958-L
\$3.00
side frame, rear truck,
3/16 Hudson

PA8958-R
\$3.00
side frame, rear truck,
3/16 Hudson

PA8959
\$14.75
pilot, shorter steps, UP
Northern, "S"

PA8961
\$10.50
truck pilot, w/4 wheels,
(o) Hudson/Northern

PA8961F
\$7.00
truck, frame pilot
wo/wheels

PA8968CH
\$2.50
link coupler cast in
weight, prewar

PA9219
\$5.00
crane hook & block
635, 481 crane



PA9245



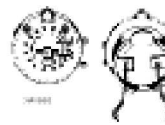
pa9446



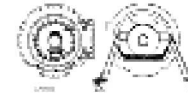
WO6133



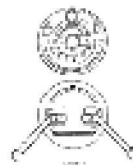
WO7406



XA8960



XA9216



xa9444

PA9245
\$14.50
pilot, NYC 3/16
Hudson,

pa9446
\$7.50
Atlantic, pilot

WO6133
\$3.00
wheel small, pilot truck
7/16" dia

WO7406
\$3.00
wheel large metal (b),
rear truck 15/16" dia

XA8960
\$11.25
boilerfront, clips, no
socket 3/16 Northern

XA9216
\$11.25
boilerfront, 3/16
Hudson clips, no socket

xa9444
\$11.25
boilerfront, 3/16 Atlantic
clips, no socket



XA9504
\$11.25
K-5 boilerfront, clips, no
socket